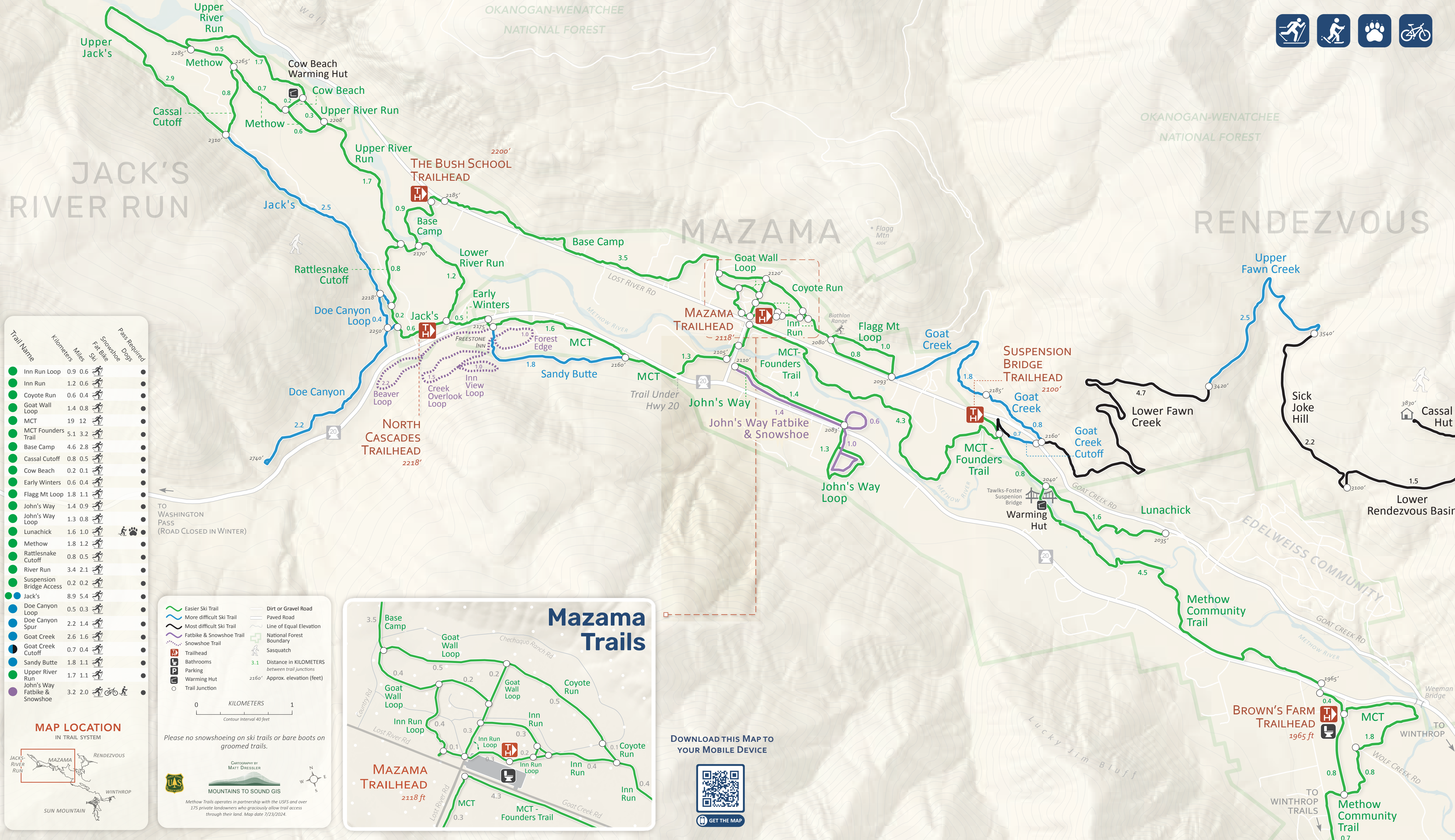


# JACK'S TO BROWN'S FARM winter trails



Trail Name	Kilometers	Miles	Pass Required
Inn Run Loop	0.9	0.6	•
Inn Run	1.2	0.6	•
Coyote Run	0.6	0.4	•
Goat Wall Loop	1.4	0.8	•
MCT	19	12	•
MCT Founders Trail	5.1	3.2	•
Base Camp	4.6	2.8	•
Cassal Cutoff	0.8	0.5	•
Cow Beach	0.2	0.1	•
Early Winters	0.6	0.4	•
Flagg Mt Loop	1.8	1.1	•
John's Way	1.4	0.9	•
John's Way Loop	1.3	0.8	•
Lunachick	1.6	1.0	•
Methow	1.8	1.2	•
Rattlesnake Cutoff	0.8	0.5	•
River Run	3.4	2.1	•
Suspension Bridge Access	0.2	0.2	•
Jack's	8.9	5.4	•
Doe Canyon Loop	0.5	0.3	•
Doe Canyon Spur	2.2	1.4	•
Goat Creek	2.6	1.6	•
Goat Creek Cutoff	0.7	0.4	•
Sandy Butte	1.8	1.1	•
Upper River Run	1.7	1.1	•
John's Way Fatbike & Snowshoe	3.2	2.0	•



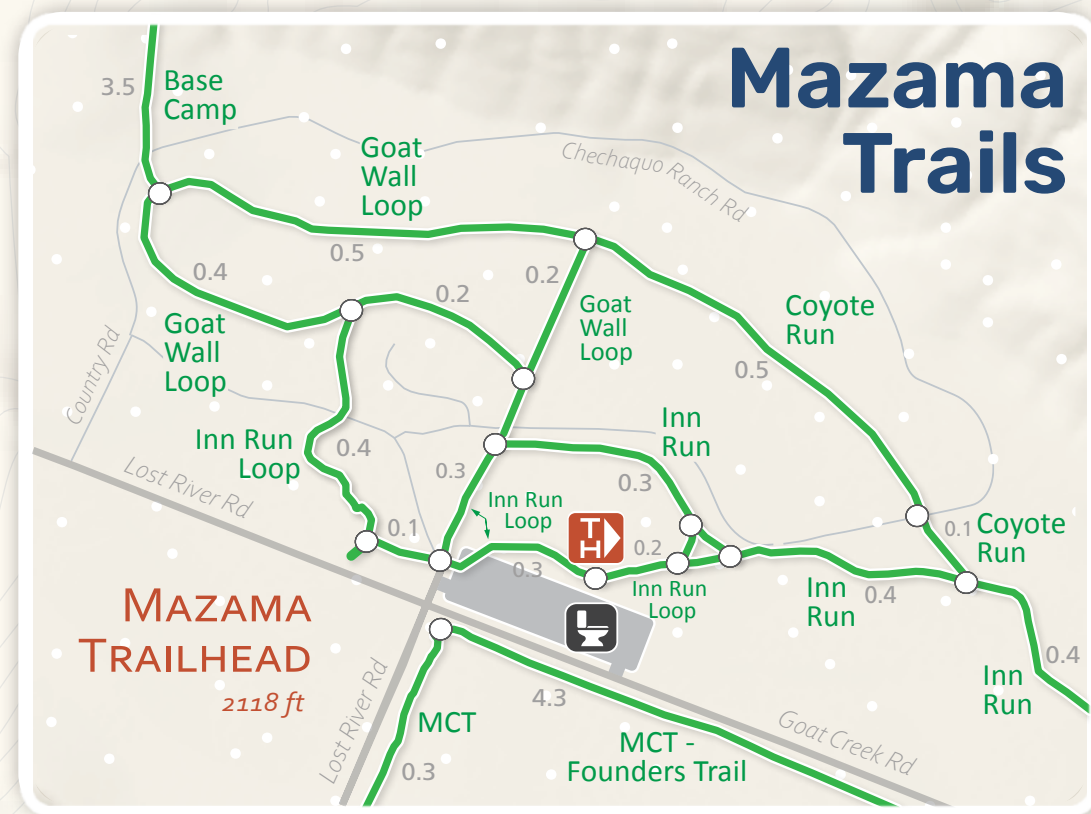
**MAP LEGEND**

- Easier Ski Trail
- More difficult Ski Trail
- Most difficult Ski Trail
- Fatbike & Snowshoe Trail
- Snowshoe Trail
- Trailhead
- Bathrooms
- Parking
- Warming Hut
- Trail Junction
- Dirt or Gravel Road
- Paved Road
- Line of Equal Elevation
- National Forest Boundary
- Sasquatch
- 3.1 Distance in KILOMETERS between trail junctions
- 2160' Approx. elevation (feet)

0 1 KILOMETERS  
Contour Interval 40 feet

Please no snowshoeing on ski trails or bare boots on groomed trails.

Cartography by MATT DIESSLER  
MOUNTAINS TO SOUND GIS  
Methow Trails operates in partnership with the USFS and over 175 private landowners who graciously allow trail access through their land. Map date 7/23/2024.



DOWNLOAD THIS MAP TO YOUR MOBILE DEVICE



GET THE MAP